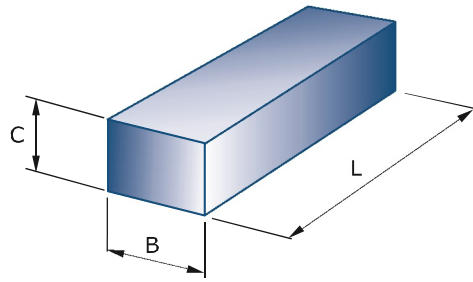


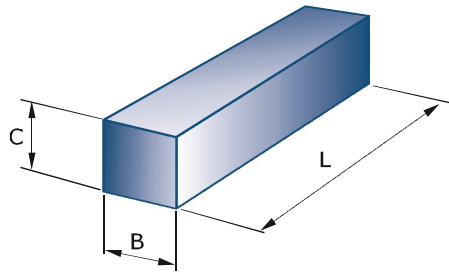
Honing stone profiles

Manufacturing to customer drawing

The shape of a honing stone is standardized to ISO 525. Furthermore, these can be supplied with various profiles as illustrated; other profiles can be manufactured to customer drawing.



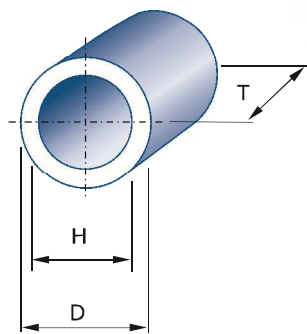
Honing stone Shape 5410
- B x C x L



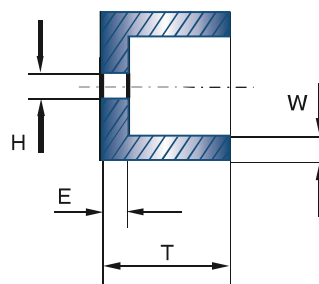
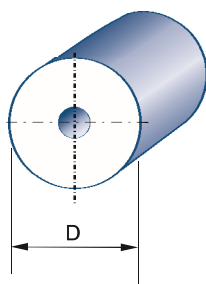
Honing stone Shape 5411
- B x C x L



Example of a honing stone profile: (Shape 5410/6)



Honing stone Shape 5420
- D x T x H



Honing stone Shape 5421
- D x T x H - W/E

Honing stone profiles

Common honing stone profiles

0



1



2



3



4



5



6



7



8



Special profiles for superfinishing

In addition to the illustrated profiles, there are a number of other shapes, which can be manufactured to drawing.

0



1



2



3



4



5



6

