

New Family in the CAFRO BOND SYSTEM

EDG

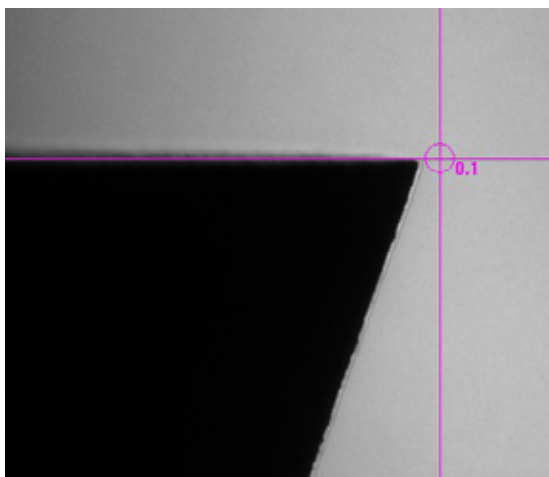
- Best edge retention
- Grinding time reduction
- Longer dressing interval
- Better thermal resistance



CAFRO Bond System expands with a new family called EDG.

An innovative bond family allowing cutting ability like TOP together with the best edge retention, which is fundamental especially for 11V9 and 12V9 cup wheels.

New, sophisticated CNC machines and precise measuring systems allow manufacturing of more complex tool geometries with tighter tolerances; Diamond and CBN wheels with sharp, stable edges are now a must.



The suggested wheel speed for 11V9 and 12V9 wheels is 22 m/s (from 18 to 28 m/s).

The tested specifications 11V9 100 10x3 D64 W125 EDG7 gave immediately very positive results.

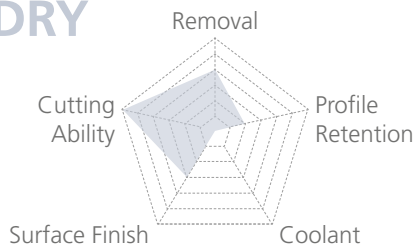
Further developments are forecasted with different wheel shapes, mostly for micro-tool manufacturing.

On the left: 11V9 setup

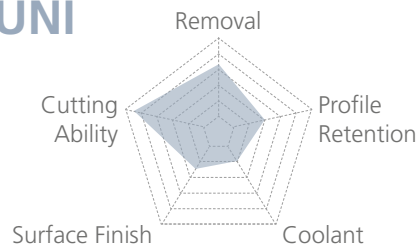
Always focused on developing products following its customers' needs, CAFRO adds at the top of its CAFRO Bonds System a new family with extraordinary edge retention.

	DIAMOND	OPERATION	CBN	
↑ HARDNESS ↓ CUTTING ABILITY	EDG 7 EDG 5	Best edge retention	EDG 8 EDG 6	↑ HARDNESS ↓ CUTTING ABILITY
	EDG 3 EDG 1		EDG 4 EDG 2	
	TOP 7 TOP 5	Edge retention	TOP 8 TOP 6	
	TOP 3 TOP 1		TOP 4 TOP 2	
	PRO 7 PRO 5	Profiling	PRO 8 PRO 6	
	PRO 3 PRO 1		PRO 4 PRO 2	
	CNC 7 CNC 5	High removal	CNC 8 CNC 6	
	CNC 3 CNC 1	CNC grinding	CNC 4 CNC 2	
	UNI 7 UNI 5	Manual grinding	UNI 8 UNI 6	
	UNI 3 UNI 1	Surface grinding	UNI 4 UNI 2	
DRY 7 DRY 5	Dry grinding	DRY 8 DRY 6		
DRY 3 DRY 1	Large contact areas	DRY 4 DRY 2		

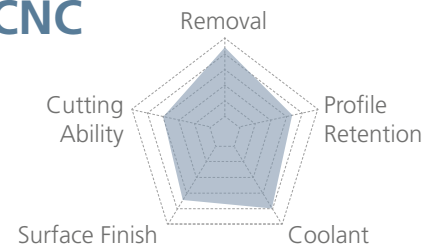
DRY



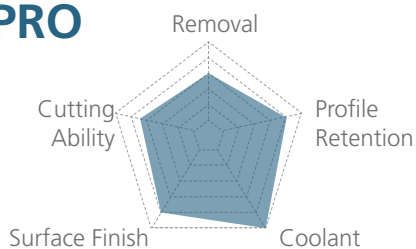
UNI



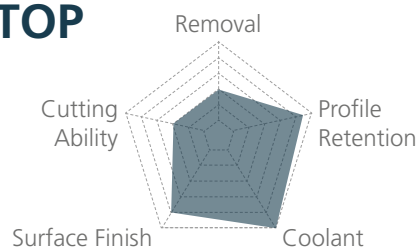
CNC



PRO



TOP



EDG

